

# **BALDWIN COUNTY SCHOOL DISTRICT**

# **ESPLOST**



**COMMITTED TO EXCELLENCE**

# WHAT IS SPLOST?

**S**pecial  
**P**urpose  
**L**ocal  
**O**ption  
**S**ales  
**T**ax

SPLOST is a 1% sales tax on any taxed purchases in Baldwin County.



# WHAT CAN SPLOST BE USED FOR?

- Capital needs
  - Improve existing schools or build new schools
  - Technological advancements
  - New busses and transportation maintenance
  - Improve energy efficiency
  - Improve security
  - Any other capital needs

# WILL THIS INCREASE PROPERTY TAXES?

NO!

- Consumption tax
- Applied to everyone who shops in Baldwin County

# DON'T MY PROPERTY TAXES PAY FOR THIS?

- Property taxes pay for operating expenses
  - 90% Salaries
  - 10% Textbooks and Utilities
- SPLOST pays for capital needs
  - Cannot be used for operating expenses



# ESPLOST PLANNING: OVERVIEW

- New video security systems
- New secure vestibules
- Technology improvements
- New HVAC systems
- New roofing systems
- Asphalt and site improvements
- New Handicap curb cuts
- Athletic Complex Improvements
- Brave Stadium Improvements
- Bus/Vehicle replacement
- Energy efficient improvements
- New air compressors
- General site and structural Improvements
- Interior Finish Improvements (carpet/tiles, paint, light fixtures,etc.)

# ESPLOST PLANNING: BLANDY HILLS ELEMENTARY

## Critical Needs: \$431,843

- New secure vestibule
- New video security system
- New HVAC for media and building 2020
- New HVAC to all IDF rooms



Total Needs for Blandy Hills: \$7,389,195

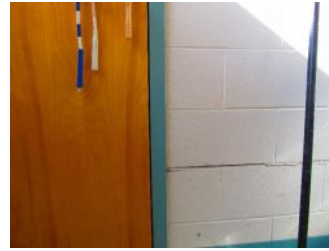




# ESPLOST PLANNING: CREEKSIDE ELEMENTARY

## Critical Needs: \$2,750,377

- New secure vestibule
- New video security system
- New complete roofing system
- New complete HVAC system
- Repair slab and wall separation in gym office



Total Needs for Creekside: \$7,242,346



# ESPLOST PLANNING: EAGLE RIDGE ELEMENTARY

## Critical Needs: \$275,309

- New secure vestibule
- New video security system
- New HVAC to all IDF closets



Total Needs for Eagle Ridge: \$8,096,547



# ESPLOST PLANNING: MIDWAY ELEMENTARY

## Critical Needs: \$149,897

- New secure vestibule
- New video security system
- New HVAC to all IDF rooms



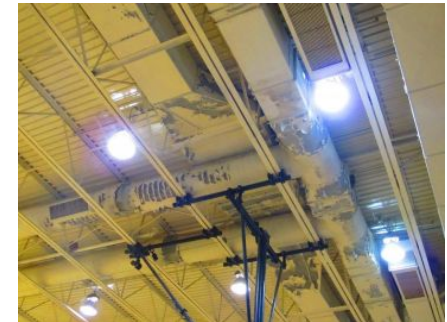
Total Needs for Midway: \$5,709,662



# ESPLOST PLANNING: OAK HILL MIDDLE SCHOOL

## Critical Needs: \$6,725,328

- New secure vestibule
- New video security system
- New complete roofing system
- Repair damaged asphalt at bus loop
- New HVAC to all IDF rooms
- New complete HVAC system



Total Needs for Oak Hill: \$12,557,558

# ESPLOST PLANNING: BALDWIN HIGH SCHOOL

## Critical Needs: \$419,258

- New secure vestibule
- New video security system
- Regrade behind 900 wing
- New call-back phones for 900 wing classrooms
- New handicap ramp curb cuts

Total Needs for Baldwin High: \$3,790,662

# ESPLOST PLANNING: BALDWIN COUNTY STADIUM

## Critical Needs: \$161,000

- Resurface track
- Restripe track

Total Needs for Baldwin County Stadium: \$1,737,280

# **ESPLOST PLANNING:**

## **BUS MAINTENANCE AND MAINTENANCE OFFICE**

### **Bus Maintenance**

**General Needs: \$258,435**

- New video security system
- New taller roll-up doors
- New fire alarms
- New air compressors

### **Maintenance Office**

**General Needs: \$384,598**

- New video security system
- New LED lighting
- New air compressor







# **ESPLOST PLANNING:**

## **CENTRAL OFFICE AND THE EARLY LEARNING CENTER**

### **Central Office**

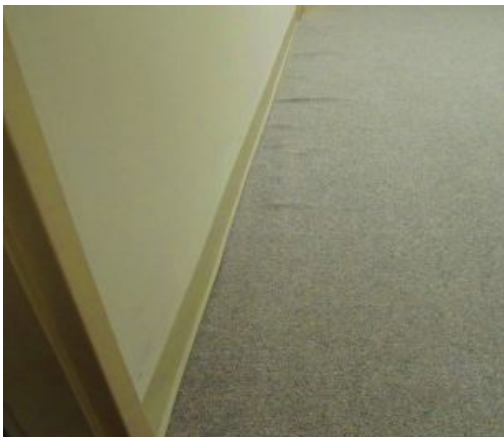
**General Needs: \$1,522,588**

- New video security system
- New finishes
- New HVAC system
- New sound system to board room
- Additional video projection for board room

### **Early Learning Center**

**General Needs: \$384,598**

- New video security system
- New secure vestibules at both entrances
- New finishes
- New HVAC system
- New complete roofing system





Budget for complex  
\$4,437,262

**BALDWIN COUNTY ATHLETIC FACILITY**  
Baldwin County Schools



# SPLOST PLANNING: SYSTEM WIDE TOTALS

Total Critical Needs	\$13,171,589
Total Technology Needs	\$5,468,228
Total for all other Facility Needs	\$40,286,126
<b>System Wide Total for All Needs</b>	<b>\$58,925,943</b>

# SUMMARY

- SPLOST is a consumption tax
- Majority of projects will improve facilities and services district wide
- Security improvements will increase safety at all sites
- Technological advancements will provide students with the tools needed in today's technology-driven learning environment

# FACTS ABOUT CONTINUING ESPLOST FOR EDUCATION

- NO new sales tax
- Extension of current sales tax
- Renewal of current ESPLOST starts after current ESPLOST ends
- Paid by everyone who shops in Baldwin County, even visitors
- Improve infrastructure in Baldwin County Schools
- Provide more safe, secure environments
- Provide students with technology needed to further their education

# **1 CENT EDUCATION SALES TAX REFERENDUM**

**NOVEMBER 3, 2015**



**EARLY VOTING BEGINS**

**OCTOBER 12, 2015**